

### SECTION AA

#### NOTE:

AUX. EARTH MAT SHALL BE SO POSITIONED THAT THE FOOT OF THE OPERATOR ALWAYS LIE OVER THE AUX. EARTH MAT AREA WHILE ATTENDING / OPERATING THE MECH. BOX THE CABLE TRENCH ROUTING SHALL BE PLANNED ACCORDINGLY



CONTR. DRG. REF.

Report No.

## EQUIPMENT EARTHING DETAILS

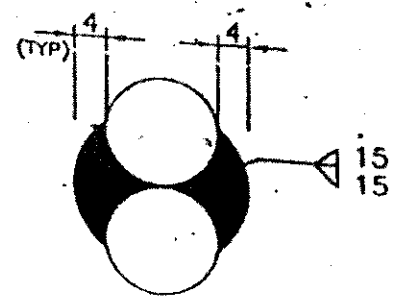
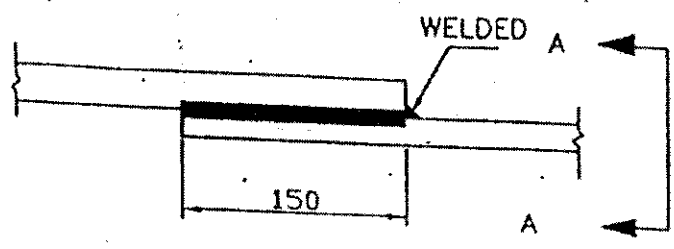
AUXILIARY EARTH MAT FOR ISOLATOR MAIN MECH. F/S  
MECH. BOX & CB (TYP.)

TB-STD-316-Auxiliary Mat.



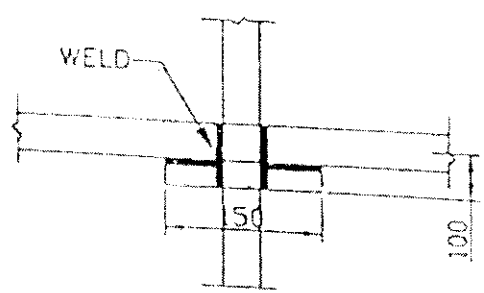
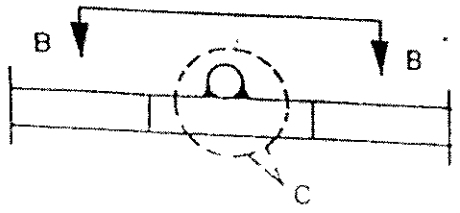
# ROD TO ROD

## 1. STRAIGHT LAP JOINT/RISER

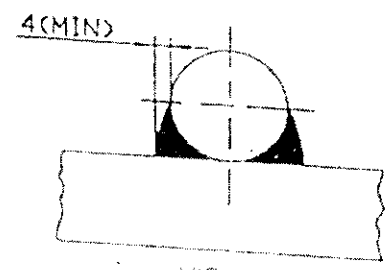


VIEW A-A

## 2. RIGHT ANGLED JOINT

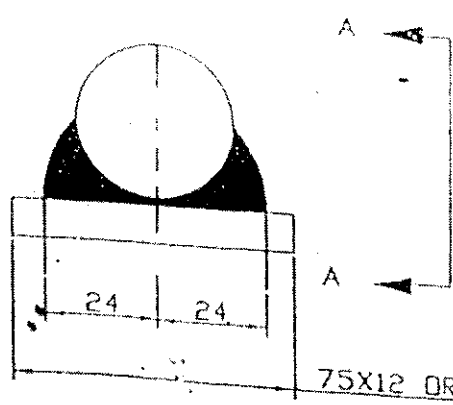


VIEW B-B

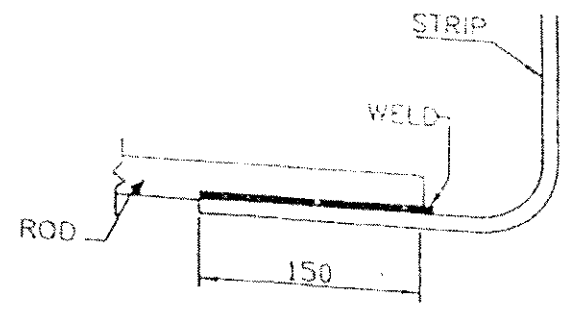


VIEW C

## 3. ROD TO STRIP



75X12 OR 50X6 GI FLAT



VIEW A-A

EQUIPMENT EARTHING DETAILS

DRG. No.

TB-STD-316-Rod Welding

REV. 00

SHEET No. 00